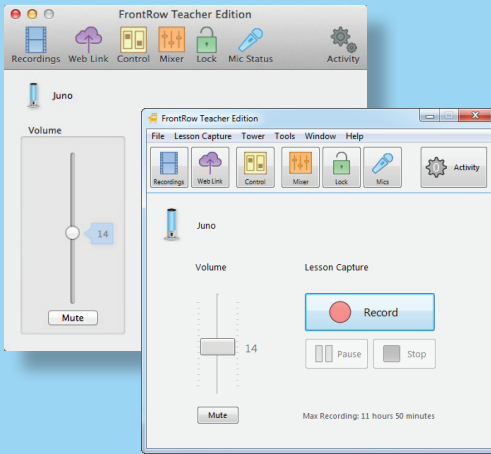


# frontrow™ juno



## QUICK START GUIDE

# 3. Activating the Teacher Edition License

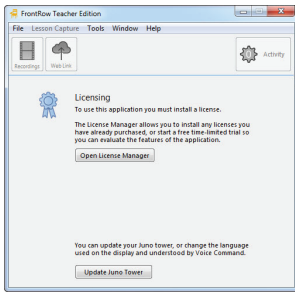


Once installed, double click the Teacher Edition chair icon to open the application.

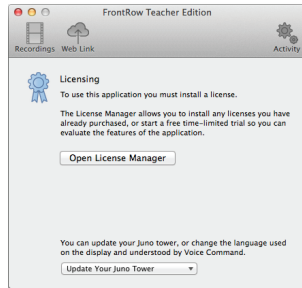
In Windows it will appear on your desktop, or if you opted not to install a desktop icon, you will find it in your Start menu under FrontRow.

On the Mac it will appear in your Applications folder.

To activate your Teacher Edition License, open the License Manager and enter the License ID or License Key provided by FrontRow. Your License ID is included in your Juno shipping box or supplied by your administrator.

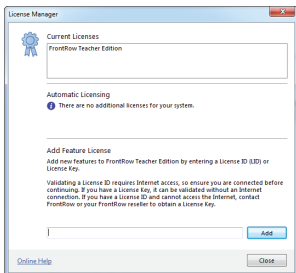


Windows

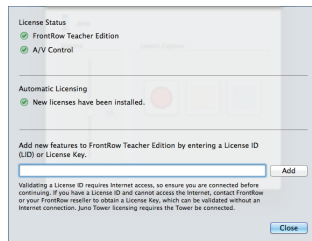


Mac OS

**NOTE:** Validating a License ID requires that your computer be connected to the Internet (a License Key can be validated without an Internet connection). If you have a License ID and cannot access the Internet, contact your FrontRow reseller to obtain a License Key.



Windows



Mac OS